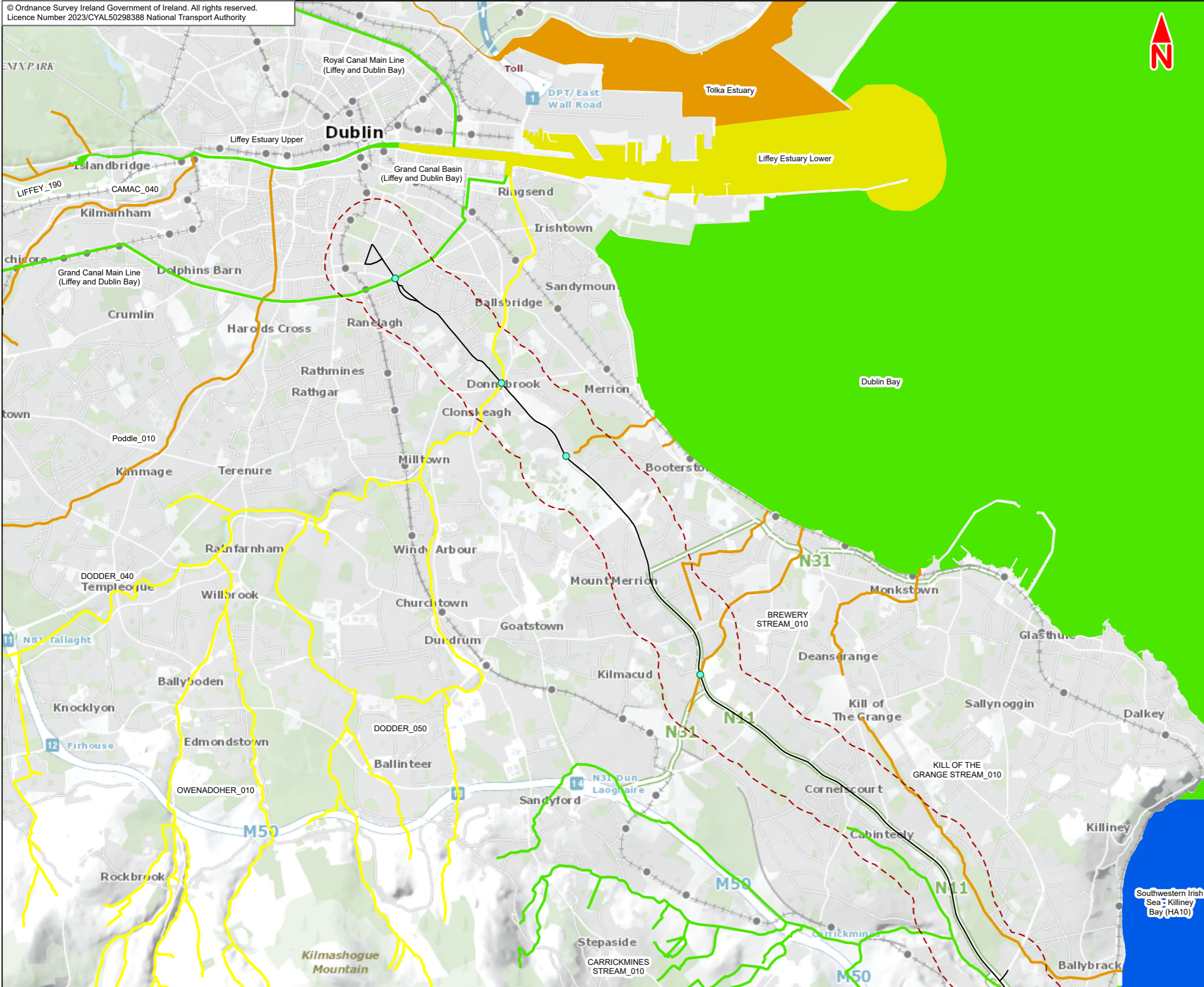


The background of the slide is a vibrant yellow. It is decorated with several abstract, organic shapes in shades of blue and green. These shapes are interconnected and layered, creating a sense of depth and movement. Interspersed among these shapes are several white circles of varying sizes, some of which are partially enclosed by the blue and green forms. The overall aesthetic is modern and graphic.

13.1 Surfacewater Study Area



- Legend:**
- Bray to City Centre Core Bus Corridor Scheme
 - - - 500m Study Area
 - Scheme Waterbody Crossings
 - Canal Waterbody WFD Status 2016 - 2021**
 - Good
 - Moderate
 - Poor
 - River Waterbody WFD Status 2016 - 2021**
 - Good
 - Moderate
 - Poor
 - Transitional Waterbody WFD Status 2016 - 2021**
 - Good
 - Moderate
 - Poor
 - Coastal Waterbody WFD Status 2016 - 2021**
 - High
 - Good

This drawing is not to be used in whole or in part other than for the intended purpose and project as defined on this drawing. Contains Irish Public Sector Data licensed under a Creative Commons Attribution 4.0 International (CC BY 4.0) licence.



Disclaimer

a. © National Transport Authority (NTA) 2023. This drawing is confidential and the copyright in it is owned by NTA. This drawing must not be either loaned, copied or otherwise reproduced in whole or in part or used for any purpose without the prior permission of NTA.

b. This drawing is to be used for the design element identified in the titleblock. Other information shown is to be considered indicative only. The drawing is to be read in conjunction with all other relevant design drawings.

c. O.S. data used for plans are printed under © Ordnance Survey Ireland Government of Ireland. All rights reserved. Licence Number 2023/CYAL50298388 National Transport Authority. All elevations are in metres and relate to OSi Geoid Model (OSGM15) Main Head. All Co-ordinates are in Irish Transverse Mercator Grid (ITM) as defined by OSi active local GPS station.

d. Information concerning the position of apparatus shown on this drawing is based on drawings supplied by the utility owners and/or the utility works contractor, whilst every care has been taken in the preparation of this drawing, positions should be taken as approximate and are intended for general guidance only and no representation is made by the NTA as to the accuracy, completeness, sufficiency or otherwise of this drawing and the position of the apparatus. The information contained herein does not purport to be comprehensive or final as the apparatus is subject to being altered and/or superceded. Recipients should not rely on this information. Any liabilities are hereby expressly disclaimed.

e. The information contained herein has been provided by the NTA but does not purport to be comprehensive or final. Recipients should not rely on the information. Neither the NTA nor any of its directors, officers, employees, agents, stakeholders or advisers make any representation or warranty as to, or accept any liability or responsibility in relation to, the adequacy, accuracy, reasonableness or completeness of the information provided as part of this document or any matter on which the information is based (including but not limited to loss or damage arising as a result of reliance by recipients on the information or any part of it. Any liabilities are hereby expressly disclaimed.



Rev	Date	Drn	Chk'd	App'd	Description
M01	May 2023	TJ	PW	DK	ISSUE FOR PHASE 4 : PLANNING

Client: **NTA**
Udarás Náisiúnta Iompair
National Transport Authority

Consultant: **JACOBS ARUP SYSTRA**

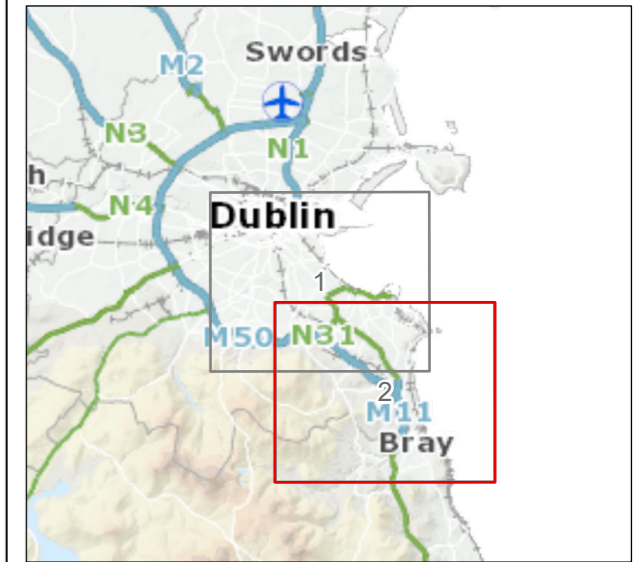
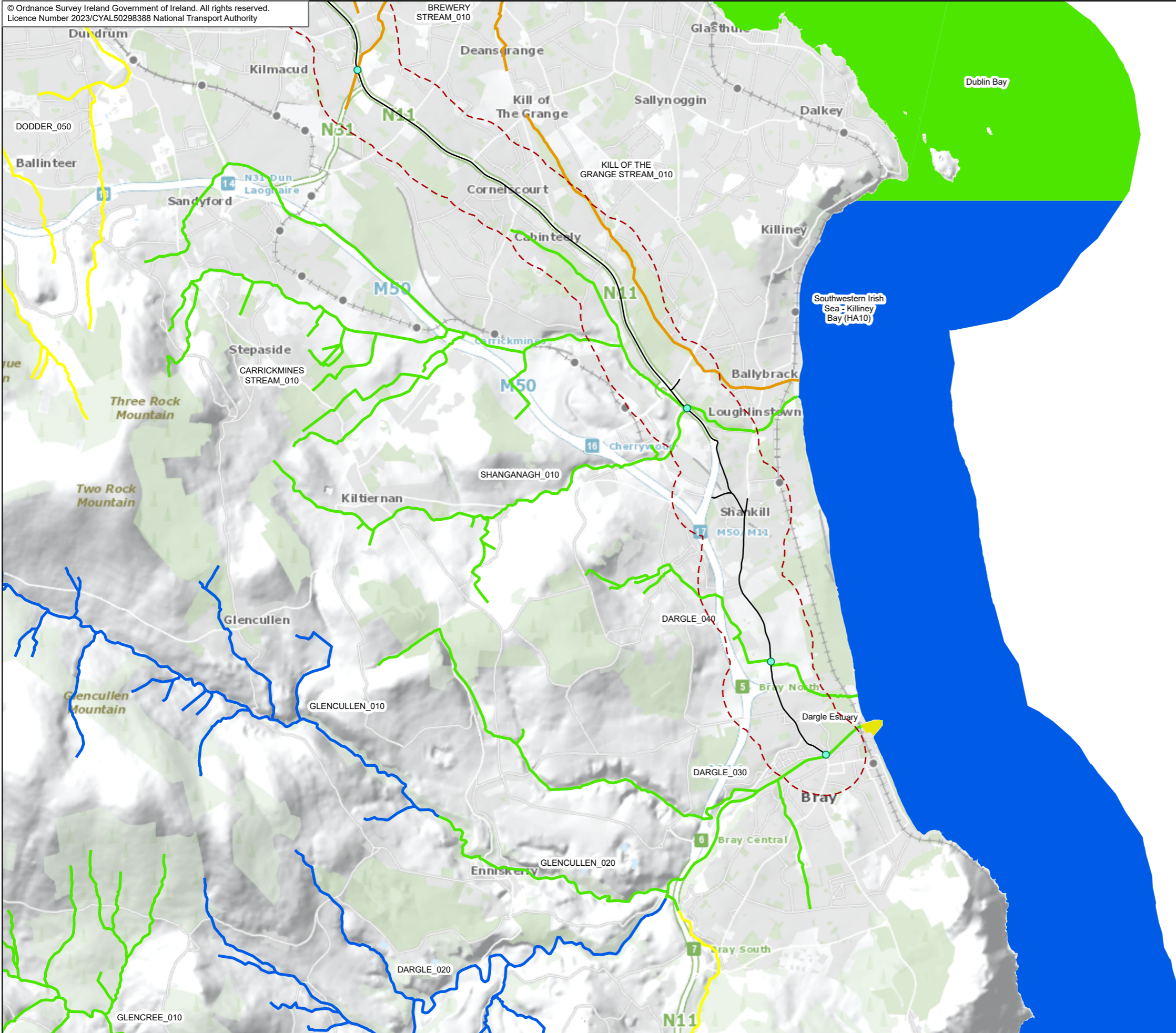
Date: 10/05/2023
Scale @ A3: 1:50 000

Project Code: BCIDE
Originator Code: JAC

Drawn: TJ
Checked: PW
Approved: DK

QMS Code: _____

Programme Title: BUSCONNECTS DUBLIN CORE BUS CORRIDORS INFRASTRUCTURE WORKS			
Drawing Title: Bray to City Centre Core Bus Corridor Scheme Figure 13.1 Surfacewater Study Area			
Drawing File Name: BCIDE-JAC-ENV_WE-0013_XX_00-DR-GG-0102	Sheet Number: 1 of 2	Status: A	Rev: M01



Legend:

- Bray to City Centre Core Bus Corridor Scheme
- 500m Study Area
- Scheme Waterbody Crossings
- River Waterbody WFD Status 2016 - 2021**
- High
- Good
- Moderate
- Poor
- Transitional Waterbody WFD Status 2016 - 2021**
- Moderate
- Coastal Waterbody WFD Status 2016 - 2021**
- High
- Good

This drawing is not to be used in whole or in part other than for the intended purpose and project as defined on this drawing. Contains Irish Public Sector Data licensed under a Creative Commons Attribution 4.0 International (CC BY 4.0) licence.



Disclaimer
a. © National Transport Authority (NTA) 2023. This drawing is confidential and the copyright in it is owned by NTA. This drawing must not be either loaned, copied or otherwise reproduced in whole or in part or used for any purpose without the prior permission of NTA.
b. This drawing is to be used for the design element identified in the titleblock. Other information shown is to be considered indicative only. The drawing is to be read in conjunction with all other relevant design drawings.
c. O.S. data used for plans are printed under © Ordnance Survey Ireland Government of Ireland. All rights reserved. Licence Number 2023/CYAL50298388 National Transport Authority. All elevations are in metres and relate to OSi Geoid Model (OSGM15) Mean Head. All Co-ordinates are in Irish Transverse Mercator Grid (ITM) as defined by OSi active local GPS station.
d. Information concerning the position of apparatus shown on this drawing is based on drawings supplied by the utility owners and/or the utility works contractor, whilst every care has been taken in the preparation of this drawing, positions should be taken as approximate and are intended for general guidance only and no representation is made by the NTA as to the accuracy, completeness, sufficiency or otherwise of this drawing and the position of the apparatus. The information contained herein does not purport to be comprehensive or final. Recipients should not rely on this information. Any liabilities are hereby expressly disclaimed.
e. The information contained herein has been provided by the NTA but does not purport to be comprehensive or final. Recipients should not rely on the information. Neither the NTA nor any of its directors, officers, employees, agents, stakeholders or advisers make any representation or warranty as to, or accept any liability or responsibility in relation to, the adequacy, accuracy, reasonableness or completeness of the information provided as part of this document or any matter on which the information is based (including but not limited to loss or damage arising as a result of reliance by recipients on the information or any part of it. Any liabilities are hereby expressly disclaimed.



Rev	Date	Drn	Chk'd	App'd	Description
M01	May 2023	TJ	PW	DK	ISSUE FOR PHASE 4 : PLANNING

Client
NTA
Udarás Náisiúnta Iompair
National Transport Authority

Consultant
JACOBS
ARUP SYSTRA

Programme Title BUSCONNECTS DUBLIN CORE BUS CORRIDORS INFRASTRUCTURE WORKS				
Drawing Title Bray to City Centre Core Bus Corridor Scheme Figure 13.1 Surfacewater Study Area				
Date 10/05/2023	Scale @ A3 1:50 000	Drawn TJ	Checked PW	Approved DK
Project Code BCIDE	Originator Code JAC	QMS Code		
Drawing File Name BCIDE-JAC-ENV_WE-0013_XX_00-DR-GG-0101	Sheet Number 2 of 2	Status A	Rev M01	

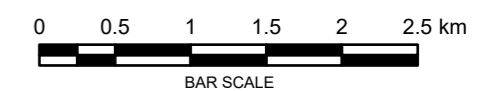
The background of the slide is a vibrant yellow. It is decorated with several abstract, organic shapes in shades of blue and green. These shapes are interconnected and feature white circular cutouts. The shapes are arranged in a way that suggests movement and flow, with some elements resembling stylized water droplets or flowing paths. The overall aesthetic is modern and clean.

13.2 WFD Protected Areas and At Risk Status of Waterbodies



- Legend:**
- Bray to City Centre Core Bus Corridor Scheme
 - 500m Study Area
 - Nutrient Sensitive Waterbodies - River Waterbodies
 - Nutrient Sensitive Waterbodies - Transitional and Coastal Waterbodies
 - Bathing Water Areas
- River Waterbodies Risk Status 2018**
- At risk
 - Not at risk
 - Under review
- Canal Waterbodies Risk Status 2018**
- At risk
 - Not at risk
 - Under review

This drawing is not to be used in whole or in part other than for the intended purpose and project as defined on this drawing. Contains Irish Public Sector Data licensed under a Creative Commons Attribution 4.0 International (CC BY 4.0) licence.



Disclaimer

a. © National Transport Authority (NTA) 2023. This drawing is confidential and the copyright in it is owned by NTA. This drawing must not be either loaned, copied or otherwise reproduced in whole or in part or used for any purpose without the prior permission of NTA.

b. This drawing is to be used for the design element identified in the titleblock. Other information shown is to be considered indicative only. The drawing is to be read in conjunction with all other relevant design drawings.

c. O.S. data used for plans are printed under © Ordnance Survey Ireland Government of Ireland. All rights reserved. Licence Number 2023/CYAL50298388 National Transport Authority. All elevations are in metres and relate to OSi Geoid Model (OSGM15) Mean Head. All Co-ordinates are in Irish Transverse Mercator Grid (ITM) as defined by OSi active local GPS station.

d. Information concerning the position of apparatus shown on this drawing is based on drawings supplied by the utility owners and/or the utility works contractor, whilst every care has been taken in the preparation of this drawing, positions should be taken as approximate and are intended for general guidance only and no representation is made by the NTA as to the accuracy, completeness, sufficiency or otherwise of this drawing and the position of the apparatus. The information contained herein does not purport to be comprehensive or final as the apparatus is subject to being altered and/or superseded. Recipients should not rely on this information. Any liabilities are hereby expressly disclaimed.

e. The information contained herein has been provided by the NTA but does not purport to be comprehensive or final. Recipients should not rely on the information. Neither the NTA nor any of its directors, officers, employees, agents, stakeholders or advisers make any representation or warranty as to, or accept any liability or responsibility in relation to, the adequacy, accuracy, reasonableness or completeness of the information provided as part of this document or any matter on which the information is based (including but not limited to loss or damage arising as a result of reliance by recipients on the information or any part of it. Any liabilities are hereby expressly disclaimed.



Rev	Date	Drn	Chk'd	App'd	Description
M01	May 2023	TJ	PW	DK	ISSUE FOR PHASE 4 : PLANNING

Client: **NTA**
Udarás Náisiúnta Iompair
National Transport Authority

Consultant: **JACOBS ARUP SYSTRA**

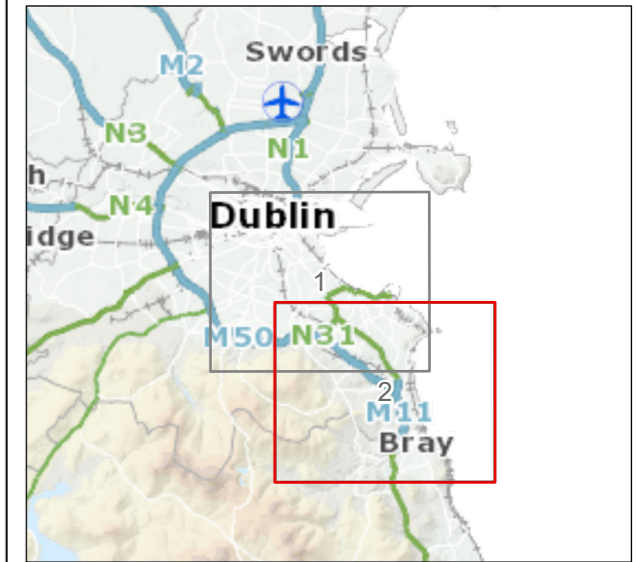
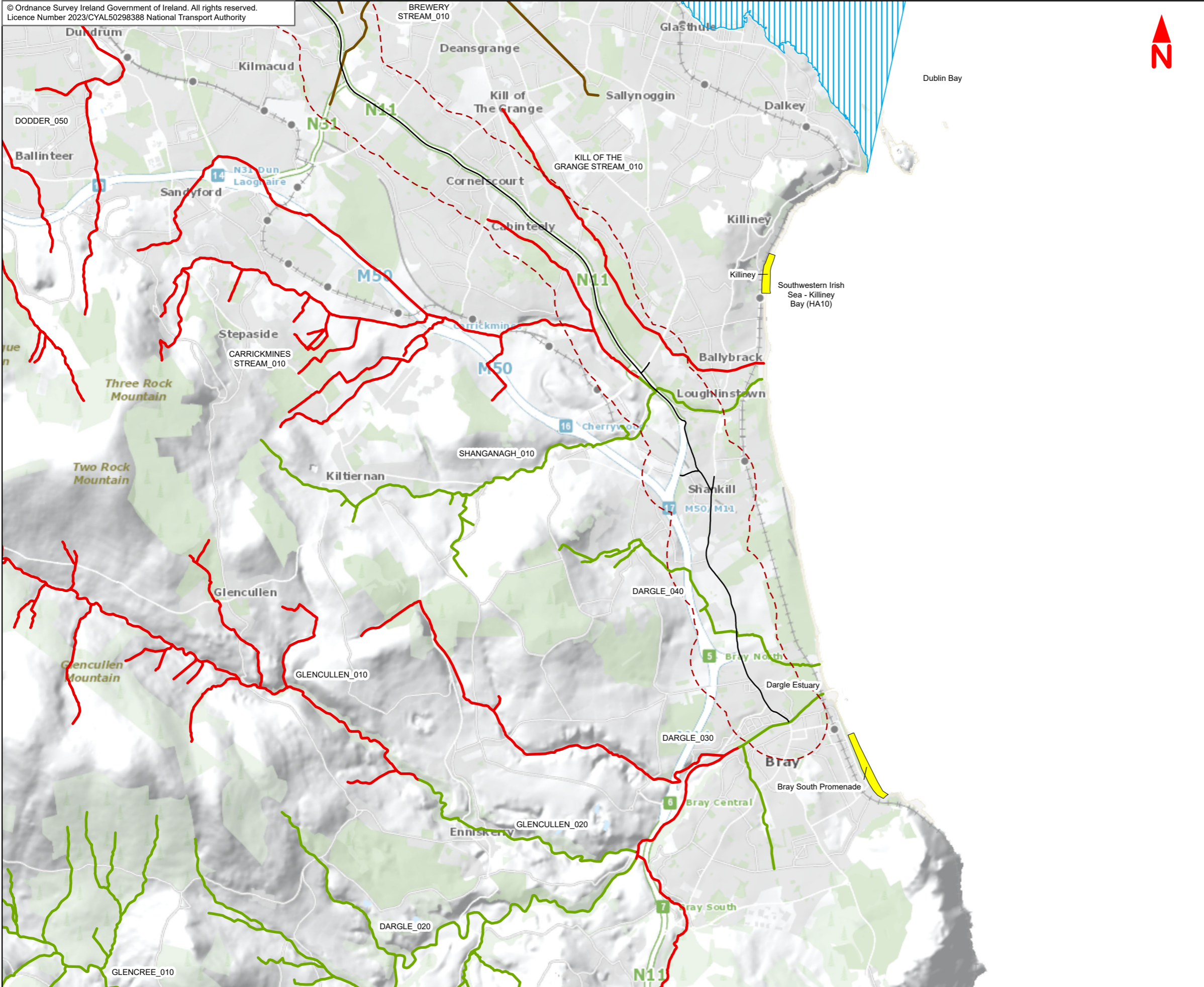
Date: 10/05/2023 | Scale @ A3: 1:50 000

Project Code: BCIDE | Originator Code: JAC

Drawn: TJ | Checked: PW | Approved: DK

QMS Code: _____

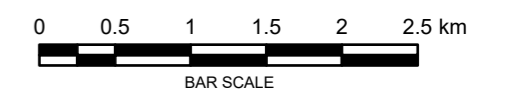
Programme Title: BUSCONNECTS DUBLIN CORE BUS CORRIDORS INFRASTRUCTURE WORKS			
Drawing Title: Bray to City Centre Core Bus Corridor Scheme Figure 13.2 WFD Protected Areas and At Risk Status of Waterbodies			
Drawing File Name: BCIDE-JAC-ENV_WE-0013_XX_00-DR-GG-0202	Sheet Number: 1 of 2	Status: A	Rev: M01



Legend:

- Bray to City Centre Core Bus Corridor Scheme
 - 500m Study Area
 - Nutrient Sensitive Waterbodies - Transitional and Coastal Waterbodies
 - Bathing Water Areas
- River Waterbodies Risk Status 2018**
- At risk
 - Not at risk
 - Under review

This drawing is not to be used in whole or in part other than for the intended purpose and project as defined on this drawing. Contains Irish Public Sector Data licensed under a Creative Commons Attribution 4.0 International (CC BY 4.0) licence.



Disclaimer
a. © National Transport Authority (NTA) 2023. This drawing is confidential and the copyright in it is owned by NTA. This drawing must not be either loaned, copied or otherwise reproduced in whole or in part or used for any purpose without the prior permission of NTA.
b. This drawing is to be used for the design element identified in the titleblock. Other information shown is to be considered indicative only. The drawing is to be read in conjunction with all other relevant design drawings.
c. O.S. data used for plans are printed under © Ordnance Survey Ireland Government of Ireland. All rights reserved. Licence Number 2023/CYAL50298388 National Transport Authority. All elevations are in metres and relate to OSi Geoid Model (OSGM15) Mean Head. All Co-ordinates are in Irish Transverse Mercator Grid (ITM) as defined by OSi active local GPS station.
d. Information concerning the position of apparatus shown on this drawing is based on drawings supplied by the utility owners and/or the utility works contractor, whilst every care has been taken in the preparation of this drawing, positions should be taken as approximate and are intended for general guidance only and no representation is made by the NTA as to the accuracy, completeness, sufficiency or otherwise of this drawing and the position of the apparatus. The information contained herein does not purport to be comprehensive or final as the apparatus is subject to being altered and/or superseded. Recipients should not rely on this information. Any liabilities are hereby expressly disclaimed.
e. The information contained herein has been provided by the NTA but does not purport to be comprehensive or final. Recipients should not rely on the information. Neither the NTA nor any of its directors, officers, employees, agents, stakeholders or advisers make any representation or warranty as to, or accept any liability or responsibility in relation to, the adequacy, accuracy, reasonableness or completeness of the information provided as part of this document or any matter on which the information is based (including but not limited to loss or damage arising as a result of reliance by recipients on the information or any part of it. Any liabilities are hereby expressly disclaimed.



Rev	Date	Drn	Chk'd	App'd	Description
M01	May 2023	TJ	PW	DK	ISSUE FOR PHASE 4 : PLANNING

Client
NTA
Udarás Náisiúnta Iompair
National Transport Authority

Consultant
JACOBS
ARUP SYSTRA

Programme Title BUSCONNECTS DUBLIN CORE BUS CORRIDORS INFRASTRUCTURE WORKS				
Drawing Title Bray to City Centre Core Bus Corridor Scheme Figure 13.2 WFD Protected Areas and At Risk Status of Waterbodies				
Date 10/05/2023	Scale @ A3 1:50 000	Drawn TJ	Checked PW	Approved DK
Project Code BCIDE	Originator Code JAC	QMS Code		
Drawing File Name BCIDE-JAC-ENV_WE-0013_XX_00-DR-GG-0201	Sheet Number 2 of 2	Status A	Rev M01	